

Higher Quality

Better Service!

Exam Actual

QUESTION & ANSWER

Accurate study guides, High passing rate!

Exam Actual provides update free of charge in
one year!

<http://www.examactual.com>

Exam : **210-065**

Title : Implementing Cisco Video
Network Devices v1.0

Version : Demo

1. Topic 1, Video Concepts

Which four features are provided by Cisco TelePresence Management Suite? (Choose four.)

- A. Scheduling of video conference calls
- B. Built-in-bridge functionality for multiparty video conferences
- C. SIP-H.323 protocol interworking
- D. Centralized management of conference resources
- E. SMTP email event notification
- F. Endpoint configuration backup and restore
- G. Cisco TelePresence endpoint automated redundancy
- H. Automated resource optimization

Answer: A, D, E, F

2. Which three features are supported by Cisco TMSPE? (Choose three.)

- A. Simplified provisioning
- B. LDAP user import
- C. Scheduling via Microsoft Outlook
- D. FindMe
- E. Jabber for Windows
- F. Automatic endpoint upgrades

Answer: A, B, D

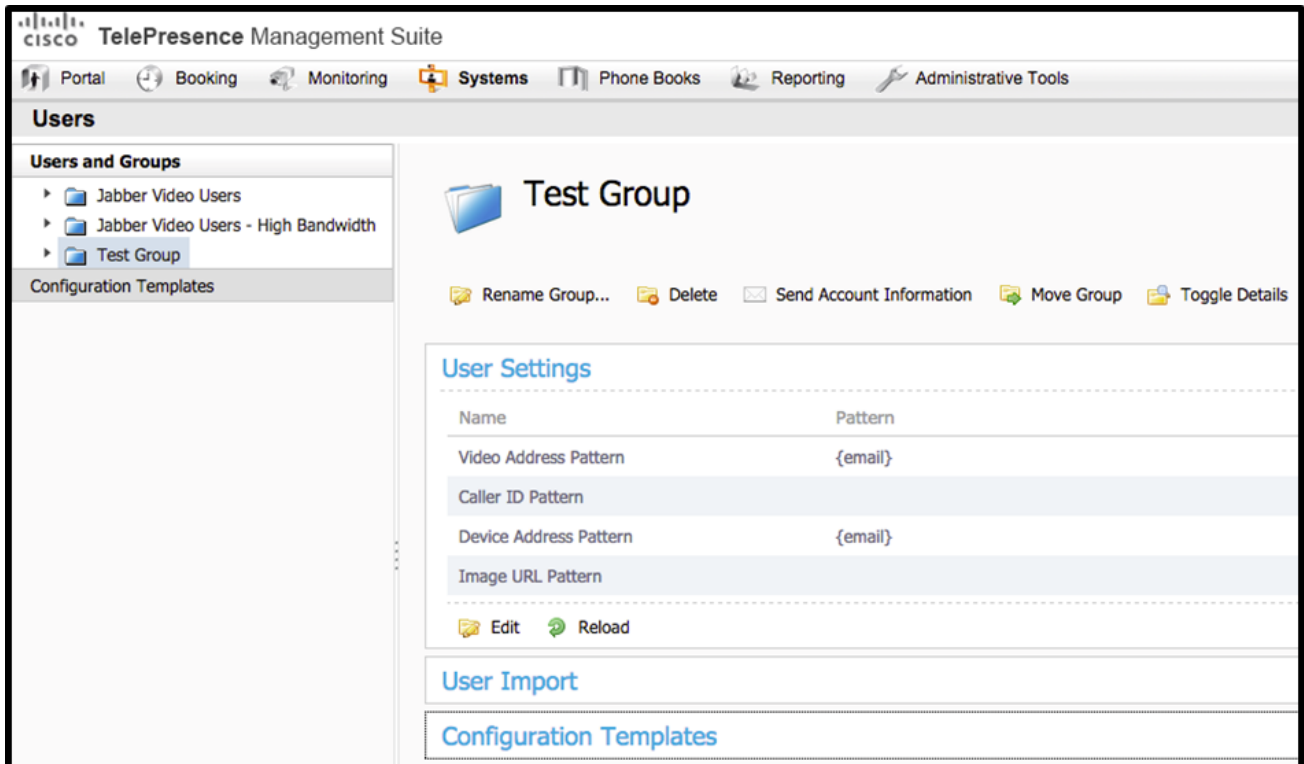
3. Management wants to modify Cisco TMS to allow users to configure the call behavior with their associated devices and dial from a single ID.

Which feature needs to be enabled and configured?

- A. Smart Scheduler
- B. Low-touch Provisioning
- C. FindMe
- D. CMR Provisioning

Answer: C

4. Refer to the exhibit.



Which configuration item shown in the exhibit should be used to assign the internal and external video communication server address for this group of users?

- A. User Settings > Video Address pattern
- B. Administrative Tools > User Settings
- C. Configuration Template > Edit Template
- D. User Import > Configuration

Answer: C

5.Which scheduling and management application can be installed on any hardware platform that meets the minimum specifications that the end customer decides to deploy?

- A. Cisco Video Communications
- B. Cisco TelePresence Management Suite
- C. Cisco Digital Media Manager
- D. Cisco TelePresence Management Switch
- E. Cisco Unified Communications Manager

Answer: B